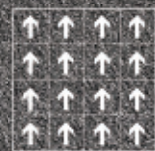


LAGOM 219





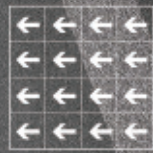
LAGOM 219001  
IN STOCK 现货





LAGOM 219002-003-006-007  
IN STOCK 现货





LAGOM 219002-004-006  
IN STOCK 现货

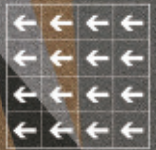
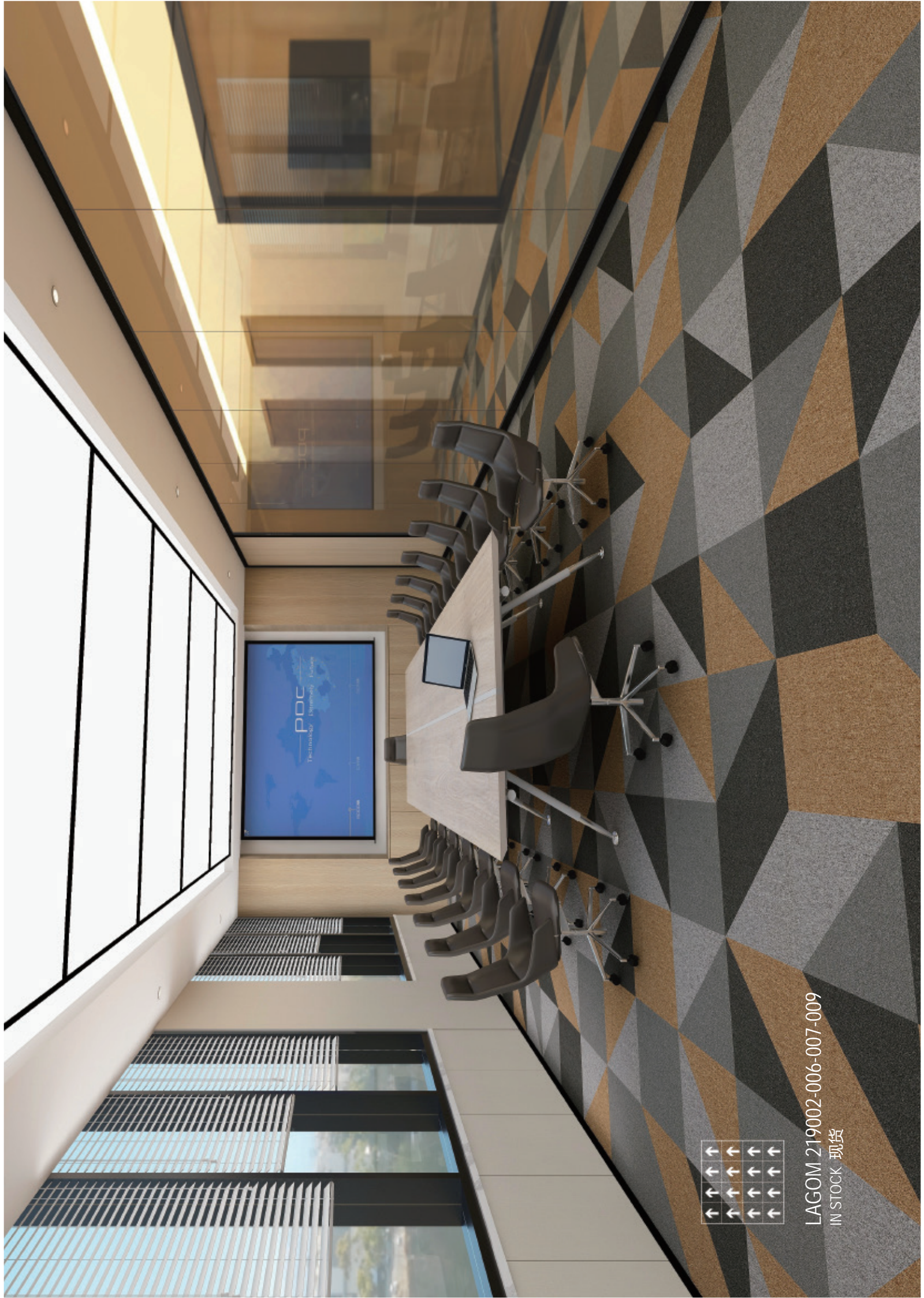






LAGOM 219002-005-006  
IN STOCK 现货





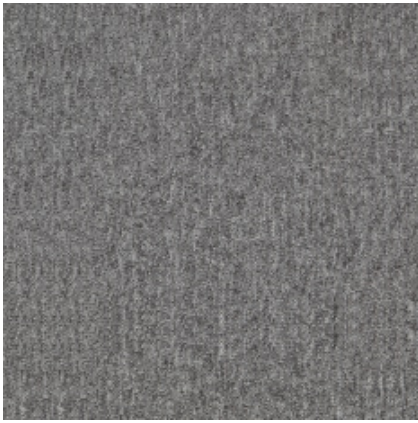
LAGOM 219002-006-007-009  
IN STOCK 现货





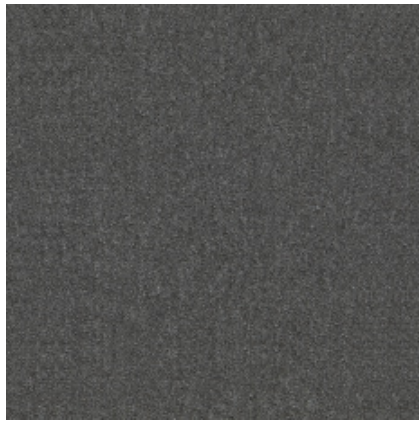
LAGOM 219008  
IN STOCK 现货





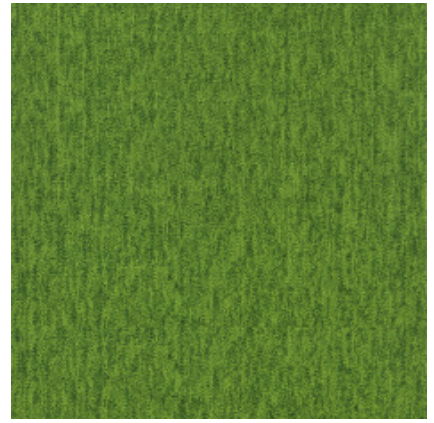
▲ IN STOCK 现货

LAGOM 219006



▲ IN STOCK 现货

LAGOM 219002



▲ IN STOCK 现货

LAGOM 219005



▲ IN STOCK 现货

LAGOM 219001



▲ IN STOCK 现货

LAGOM 219007



▲ IN STOCK 现货

LAGOM 219009



▲ IN STOCK 现货

LAGOM 219008



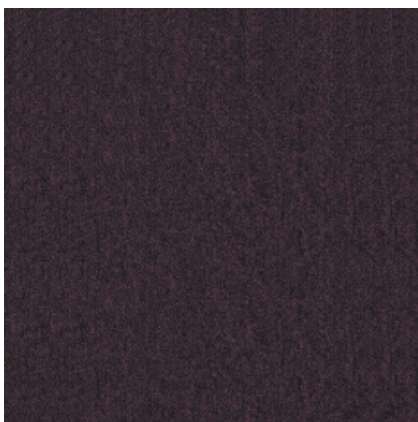
▲ IN STOCK 现货

LAGOM 219004



▲ IN STOCK 现货

LAGOM 219010



▲ IN STOCK 现货

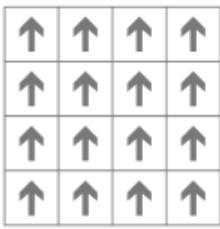
LAGOM 219003



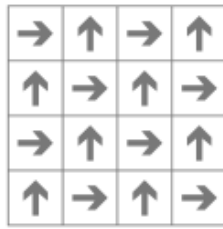
Specification 技术指标

Product Name 产品名称	LAGOM 219
Product Code 产品编码	LAGOM 219
Tufted construction 簇绒结构	Level Loop 平圈
Fiber 纱线	100% Nylon 100% 尼龙
Dye method 染色工艺	Solution Dyed 原液染色
Gauge 针距	1/10
Tufted weight(g/m <sup>2</sup> ) 绒重 (克 / 平方米)	480 ± 5%
Tile size(mm) 地毯尺寸 (毫米)	500 x 500
Pile height(mm) 平均绒高 (毫米)	3.5 ± 0.5
Total thickness(mm) 总厚度 (毫米)	5.5 ± 0.5
Standard Backing 标准底背	Glass fiber reinforced PVC

Recommended installation methods 建议铺装方式



Monolithic  
顺铺



Quarter-turn  
对角铺

 Anti-fouling	 Anti-static	 Environmental	 Passed various tests	 Fashion colors	 100%B,C,F Yarn
 Reduced Flammability	 Isolation acoustic	 Colorfast	 Chair roulettes	 No edge ravel	 Wear resistance
 Soil Resistance	 Wear Warranties	 Dimensional Stability	 Long life-span	 Easy to transport	 Non-moid